



An ISO 9001:2015 Company

MACWINTM
ENGINEERS

A BETTER
WAY FOR
ENGINEERING



www.macwinpumps.com



WELCOME TO MACWIN ENGINEERS

“ We manufacturing, supplying & exporting Industrial Pumps. Our range encompasses Hydraulic Test Pumps, Filter Press Pumps, Centrifugal Process Pumps, Industrial Sewage Pump, Centrifugal Chemical Pumps, and Polypropylene Pumps. Further, we also provide Rotary Gear Pumps, Boiler Feed Pumps, Submersible Sewage Pumps and Industrial Pumps. Designed using steel, iron and steel, these pumps meet the requirements of agriculture, steel, fertilizer and chemical process industries.”

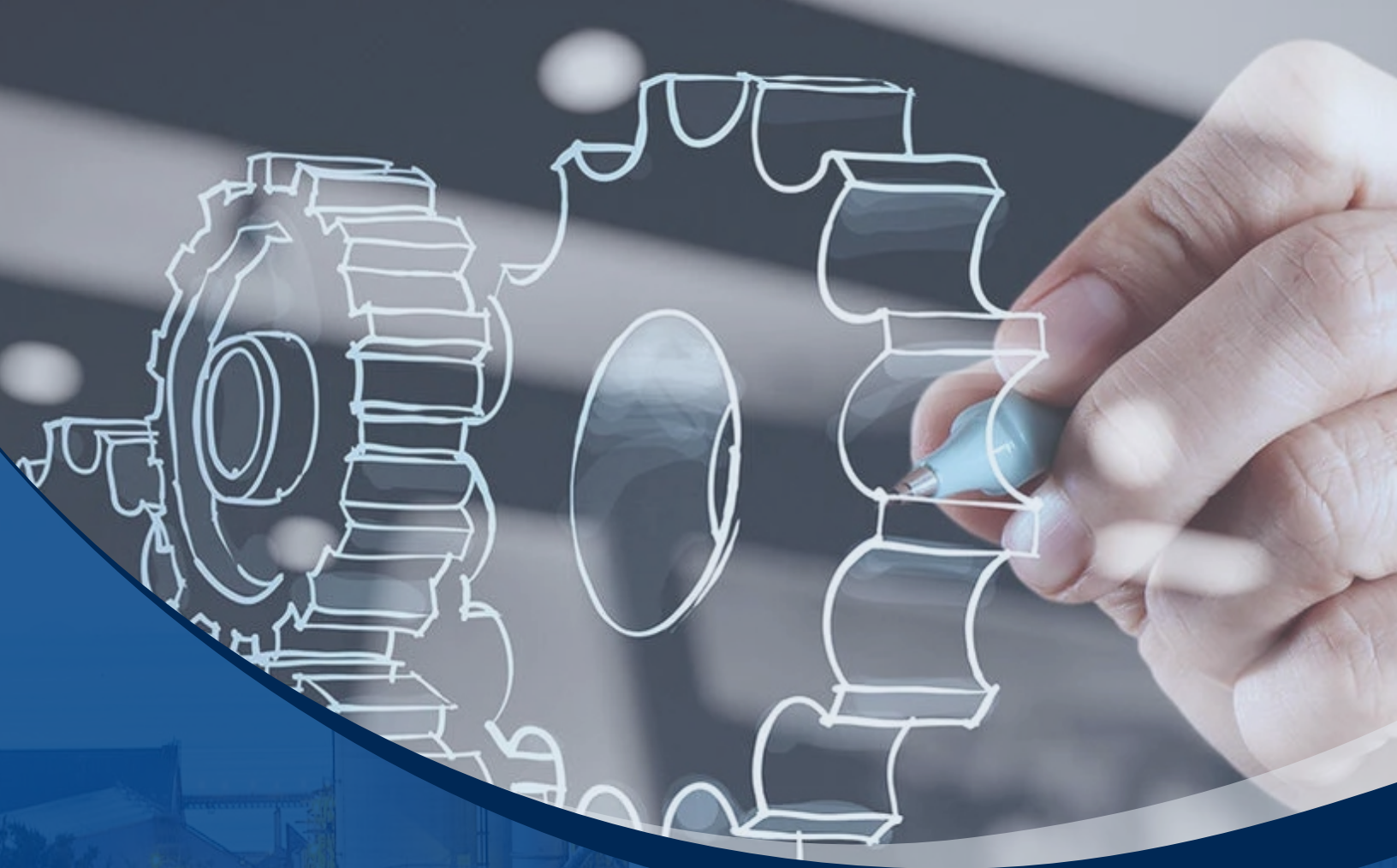
A JOURNEY OF EXCELLENCE

20 YEARS+ EXPERIENCE IN PUMP INDUSTRIES.

Being at the forefront of the Indian pump industry, we, at MACWIN Pumps, manufacture and supply the most high- quality pumps, ranging through various industrial sectors. Our products are revered for their finesse and integrity which has been honed by our expert engineers.

Our products are highly durable and made with superior quality raw materials that can stand the toughest tests. They can efficiently sustain and transport both low and high-temperature liquids, recovery solvents, heat transfer fluids, toxic liquids, acids, bases, noxious, and expensive high purity fluids.

Our products are also backed by our unflinching warranty and support which provides our clients, not only premium quality but also world-class service.



Our Vision

OUR CUSTOMER'S GROWTH IS
THE GROWTH OF THE COMPANY

To Exceed Our Customers Expectation In Quality

Our Mission

"OUR MISSION IS TO ACHIEVE SUSTAINABLE
ENVIRONMENTAL IMPROVEMENTS IN FLUID
HANDLING SYSTEMS."

We ensure maximum safety and the ultimate in quality with the energy efficient products and services we offer. Satisfied customers are always at the heart of what we think and do. Dedicated, well-trained professionals, flat hierarchies and short lines of decision-making keep us agile. We focus on customer responsiveness and delivering efficient and excellent service.

Our Philosophy



BUILDING TRUST

We aim to forgive long lasting bonds of trust with customers by living up to our commitments.



PROPAGATING SUSTAINABILITY

Each and every product and service we provide helps build a sustainable future.



INNOVATING CONTINUOUSLY

We constantly try to incorporate new technologies and advanced instruments to make our products more efficient and durable.

WCPP SERIES

SINGLE STAGE, END SUCTION BACK PULL OUT TYPE
CENTRIFUGAL PROCESS PUMPS



Operating Data :

Capacity	: Up to 500M3/hr
Head	: Up to 120 Mtr.
Discharge Size	: 25 mm to 200 mm
Temperature	: 350°C
Speed	: Up to 3500 rpm
Pressure	: Up to 12 kg/cm2
M.O.C.	: C.I, C.S., SS-304 / 304L, SS316 / 316L, Alloy-20, CD4MCU Hast alloy B & C

Applications :

- Hot and cold water circulation, cooling water circulation.
- Drip irrigation, water supply and building services.
- Thermic fluid, jet dyeing, volatile fluids.
- Condensate handling, fire fighting system, environmental.
- Engineering, Marine, refrigeration and cooling tower installation etc...
- Chemicals, petrochemicals, refineries, sugar, paper, laminates.
Industries, rubber, handling of hydrocarbons, organic and inorganic chemicals, condensate, d.m. water, food industries, salt, textiles Industries, power stations and industries such as pulp, fertilizer, etc...
- Corrosive and abrasive process chemicals like acids, alkalis, solvents, slurries hydrocarbons, crystallizing, liquids, nitric, ammonia, phosphate, chemical effluents, etc...

WFPP SERIES

HORIZONTAL SINGLE STAGE
SIDE SUCTION PUMPS



Operating Data :

Capacity	: Up to 100 M3/hr
Head	: Up to 80 Mtr.
Discharge Size	: 40 mm to 100 mm
Temperature	: 130°C
Speed	: Up to 3500 rpm
Pressure	: Up to 8 kg/cm2
M.O.C.	: C.I, C.S., SS-304 / 304L, SS316 / 316L, Bronze, Alloy-20, CD4MCU Hast alloy B & C , etc....

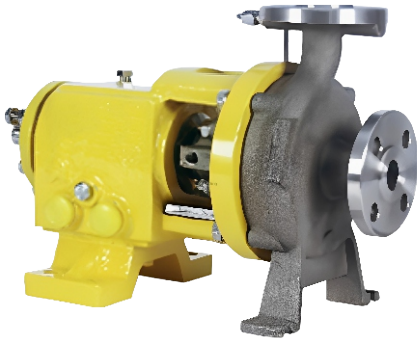
Note : Only For Positive / Flooded Suction Head

Applications :

- Filter press feeding.
- Effluent treatment plant.
- Dyes & intermediates.
- Steel rolling mills.
- All types of industrial application.
- Slurry transfer.
- Ceramic, ETP & STP.
- Paper and pulp, sugar & food.
- Eva-operator, scrubber application.

WCP-SM SERIES

CENTRIFUGAL PROCESS PUMPS
(ANSI) IN INVESTMENT CASTING



Operating Data :

Capacity	: Up to 150M3/hr
Head	: Up to 100 Mtr.
Discharge Size	: 25 mm to 100 mm
Temperature	: 250°C
Speed	: Up to 3500 rpm
Pressure	: Up to 10 kg/cm ²
M.O.C.	: C.I, C.S., SS-304 / 304L, SS316 / 316L, Bronze, Alloy-20, CD4MCU Hast alloy B & C , etc....

Applications :

- ☑ Organic/Inorganic chemicals, volatile liquids, corrosive chemicals, caustic process, effluent, filter press, slurry application.
- ☑ Pharmaceutical, dyes, textiles, kerosene, diesel and other solvents.
- ☑ ETP, STP & waste water treatment plant, fertilizers, cement and steel industries.
- ☑ For pumping chemicals, with solids in suspension polluted liquids.
- ☑ Widely used for public and civil engineering.
- ☑ Paper and pulp industries.

WPP SERIES

CORROSION RESISTANT
POLYPROPYLENE
CENTRIFUGAL PUMPS



Operating Data :

Capacity	: Up to 100 M3/hr
Head	: Up to 65 Mtr.
Discharge Size	: 50 mm to 100 mm
Temperature	: Up to 80°C
Speed	: Up to 3500 rpm
Pressure	: Up to 6.5 kg/cm ²
M.O.C.	: PP, UHMWPE

Applications :

- ☑ Water treatment plant, effluent treatment plant, electro plating, pickling & steel rolling mills.
- ☑ Excellent for transfer and loading - unloading like HCL, Sulphuric Acid/Alkali, Caustic Liquid.
- ☑ Scrubbing of corrosive gases like NH₃, CO₂, SO₃, SO₂, I₂, F₂, Br₂, Cl₂, etc.
- ☑ For handling liquids in various industries like textile, paper, cellulose, sugar, steel, food, having temperature range, materials, etc.....
- ☑ Ideal for circulation of chemicals in metal finishing industry.
- ☑ Natural choice for pickling line & scrubber in steel plants.
- ☑ High capacity transfer pump, filter press for dyes & chemicals, descaling, oil & Other fuels.

WPP-M SERIES

POLYPROPYLENE MONOBLOCK PUMPS



Operating Data:

Capacity	: Up to 50 M3/hr
Head	: Up to 45 Mtr.
Discharge Size	: 25 mm to 50 mm
Temperature	: Up to 80°C
Speed	: Up to 3500 rpm
Pressure	: Up to 4.5 kg/cm ²
M.O.C.	: PP, UHMWPE, PVDF

Applications:

- ☑ Water treatment plant, effluent treatment plant, electro plating, pickling & steel rolling mills.
- ☑ Excellent for transfer and loading-unloading like HCL, Sulphuric Acid/Alkali, Caustic Liquid.
- ☑ Scrubbing of corrosive gases like NH₃, CO₂, SO₃, SO₂, I₂, F₂, Br₂, Cl₂, etc.
- ☑ For handling liquids in various industries like textile, paper, cellulose, sugar, steel, food, having temperature range, materials, etc.
- ☑ Ideal for circulation of chemical in metal finishing industry.
- ☑ Natural choice for pickling line & scrubber in steel plants.
- ☑ High capacity transfer pump, filter press for dyes & chemicals, descaling, oil & other fuels.

WVPP SERIES

VERTICAL SEAL / GLAND LESS PUMPS



Operating Data:

Capacity	: Up to 50 M3/hr
Head	: Up to 45 Mtr.
Discharge Size	: 25 mm to 50 mm
Temperature	: Up to 80°C
Speed	: Up to 3500 rpm
Pressure	: Up to 4.5 kg/cm ²
M.O.C.	: PP, UHMWPE, PVDF

Advantage:

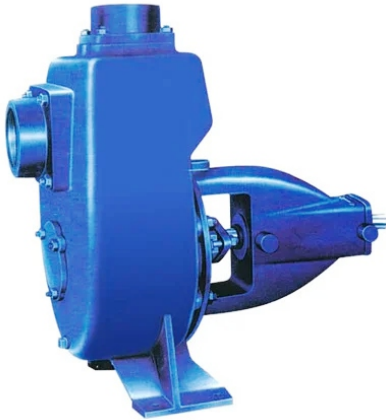
- ☑ No. 1 choice for effluent treatment plants since there are no mechanical seals / glands.
- ☑ Can run dry due to absence of shaft seals.
- ☑ Few parts facilities maintenance.

Applications:

- ☑ Water treatment plant, effluent treatment plant, electro plating, pickling & steel rolling mills.
- ☑ Excellent for transfer and loading – unloading like HCL, Sulphuric Acid/Alkali, Caustic Liquid.
- ☑ Scrubbing of corrosive gases like NH₃, CO₂, SO₃, SO₂, I₂, F₂, Br₂, Cl₂, etc.
- ☑ For handling liquids in various industries like textile, paper, cellulose, sugar, steel, food, having temperature range, materials, etc.
- ☑ Ideal for circulation of chemical in metal finishing industry.
- ☑ Natural choice for pickling line & scrubber in steel plants.
- ☑ High capacity transfer pump, filter press for dyes & chemicals, descaling & oil.

WMP SERIES

SINGLE STAGE HORIZONTAL
NON-CLOG SELF PRIMING,
MUD/SEWAGE PUMPS



Operating Data :

Capacity	: Up to 400 M3/hr
Head	: Up to 55 Mtr.
Suc. Head	: Up to 5 Mtr.
Discharge Size	: 40 mm to 200 mm
Solid Size	: Up to 50 mm
Temperature	: Up to 110°C
Speed	: Up to 3500 rpm
Pressure	: Up to 5.5 kg/cm ²
M.O.C.	: C.I, C.S., SS-304 / 304L, SS316 / 316L, Bronze, Alloy-20, CD4MCU Hast alloy B & C , etc....

Applications :

- ☑ Dewatering, mud, marine, effluent, hotel, loading & transfer of oils, spirits, swimming pools, gas oils, engine cooling.
- ☑ Vessels, industrial-pumping petroleum products, chemical.
- ☑ Civil construction-dewatering foundations, trenches and pits.
- ☑ Filter press feeding, ETP, STP, waste water treatment plant.
- ☑ Mobile machinery - cooling water for marine engines and shovels.
- ☑ Public utilities - sewage pumping.
- ☑ Pier, excavations, pits, pot-holes etc., gram panchayats, municipalitie public health departments, large housing colonies, industries like chemical, pharmaceuticals, food, cement, paper, sugar, salt, steel an other for liquid cargo from freighter, barges.

WMSP SERIES

SINGLE STAGE HORIZONTAL,
NON-CLOG SELF PRIMING,
MUD/SEWAGE PUMPS
(MECHENICAL SEAL TYPE)



Operating Data :

Capacity	: Up to 75 M3/hr
Head	: Up to 58 Mtr.
Suc. Head	: Up to 7 Mtr.
Discharge Size	: 32 mm to 80 mm
Solid Size	: Up to 25 mm
Temperature	: Max. 110°C
Speed	: Up to 3500 rpm
Pressure	: Up to 5.8 kg/cm ²
M.O.C.	: C.I, C.S., SS-304 / 304L, SS316 / 316L, Bronze, Alloy-20, CD4MCU Hast alloy B & C , etc....

Mechanical Seal Option :

STV (Carbon Vs Ceramic / Tc with NBR Elastomer)
CCV (Carbon Vs Ceramic / Tc with Viton Elastomer)
CCT (Carbon Vs Ceramic / Tc with PTFE Elastomer)

Applications :

- ☑ Dewatering, mud, marine, effluent, hotel, oils, spirits, swimming pools, gas oils. Vessels, industrial-pumping petroleum products, chemical.
- ☑ Civil construction-dewatering foundations, trenches and pits, Public utilities.
- ☑ Filter press feeding, ETP, STP, waste water treatment plant, sewage pumping.
- ☑ Mobile machinery - cooling water for marine engines and shovels.
- ☑ Pier, excavations, pits, pot-holes etc., gram panchayats, municipalitie public health departments, large housing colonies, industries like chemical, pharmaceuticals, food, cement, paper, sugar, salt, steel an other for liquid cargo from freighter, barges.

WSVP SERIES

VERTICAL "IN-LINE"
SELF-PRIMING LIQUID RING
SOLVENT TRANSFER PUMP



Operating Data:

Capacity	: Up to 21 M3/hr
Head	: Up to 35 Mtr.
Discharge Size	: 25 mm to 65 mm
Temperature	: Up to 150°C
Speed	: Up to 1450 rpm
Pressure	: Up to 3.5 kg/cm ²
M.O.C.	: CS, Ss316

Features:

- High head low capacity pump.
- Excellent for handling solvents from barrels and from tank farms to the charging vessels.
- Seal leakage can easily be detected from window in priming chamber.
- Pump can take negative lift from 3 to 5 meters.
- Maintenance is easier, Drain arrangement is standard.
- Compact design - requires less space, No grouting required.
- Note: Since the pump is having close tolerance and always fitted with mechanical seal it is advisable to have a suitable strainer before pump inlet.

Applications:

- Chemicals
- Pharmaceutical
- Solvent transfer handling

WSP SERIES

SELF PRIMING
SOLVENT PUMPS



Operating Data :

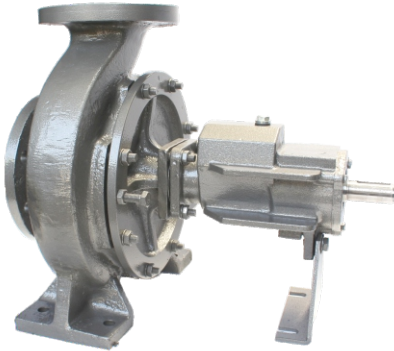
Capacity	: Up to 8 M3/hr
Head	: Up to 50 Mtr.
Discharge Size	: 25 mm to 40 mm
Temperature	: Up to 110°C
Speed	: Up to 1440 rpm
M.O.C.	: C.I, C.S., SS316, Bronze, etc....

Applications :

- Loading and unloading of small & big drums. Barrels.
- Small tankers.
- Large use rolling mills for pickling and solvent plant.
- Pharmaceutical.
- Laminates.

WHO SERIES

Air Cooled Thermic Fluid Pump



Operating Data :

Capacity	: Up to 180M3/hr
Head	: Up to 80 Mtr.
Discharge Size	: 32 mm to 100mm
Temperature	: 350°C
Speed	: Up to 3500 rpm
Pressure	: Up to 8 kg/cm ²
Cooling Method	: With Air
M.O.C.	: Cast Steel, Alloy Cast Steel

Applications :

- Synthetic - Fiber Industries
- Petro-Chemical Industries
- Oil Industries
- Food Industries
- Textile, Dyeing, Printing, Plastic & Rubber Industries
- Paper Making Industries

WLVSP SERIES

Vertical Sump Pumps



Operating Data :

Capacity	: Up to 150 m ³ /hr
Head	: Up to 60 Mtr.
Discharge Size	: 25 mm to 125 mm
Temperature	: 60°C
Pump Length	: Up to 4 Mtr.
Pressure	: Up to 6kg /cm ²
Speed	: Up to 3000 rpm
M.O.C.	: C.I., CS, SS-304, SS 316 etc...

Applications :

- Water treatment plant, effluent treatment plant, electro plating, pickling & steel rolling mills.
- Excellent for transfer and loading - unloading like HCL, Sulphuric Acid/Alkali, Caustic Liquid.
- Scrubbing of corrosive like NH₃, CO₂, SO₃, SO₂, I₂, F₂, Br₂, Cl₂, etc.
- For handling liquids in various industries like textile, paper, cellulose, sugar, steel, food, having temperature range, materials, etc.....
- Ideal for circulation of chemicals in metal finishing industry.
- Pesticide / Insecticide Plants, Chlorine Plants.

WSSP SERIES

HIGH SPEED LIGHT DUTY
SEWAGE AND EFFLUENT
SUBMERSIBLE PUMPS



Operating Data :

Capacity	: Up to 132 M3/hr
Head	: Up to 40 Mtr.
Temperature	: 45°C
HP	: 0.75 to 10 (1 to 3 HP in single phase)
RPM	: Up to 2880
Delivery Size	: 32 mm to 100 mm
Solid Size	: 50 mm
Connection	: DOL
Voltage & Phase	: 415 V, 3 Phase / 215 V, 1 Phase Up to 3 HP
Insulation/Protection	: 'F' Class / IP 68
Moter	: Two pole continues duty type squirrel cage Induction Motor
Cable	: PVC Insulated Double heated Copper Conductor Flexible Cable
Mechanical Seal	: Bi-Direction Twin Mechanical Seal with Various face combination looking to the application.
M.O.C.	: C.I., C.S. Optional Parts : Implier, Casing, Wear Plate with Various M.O.C. Bronze, CF8, CF8M, CD4MCU

Applications :

- Muddy water transfer.
- Swimming pool.
- Dewatering of ponds, basement of huge building.
- Power plant.
- Effluent transfer, ETP, STP, waste water treatment plant.
- Used in hotel, hospitals, railways, dairy, chemical ind, sugar, steel, cement, food beverages etc...

WDP Series

Air Operated Double Diaphragm Pumps



Operating Data :

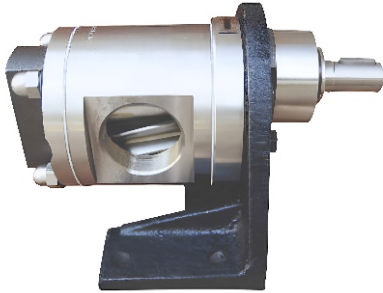
Capacity	: Up to 55 m ³ /hr
Head	: Up to 70 mtr.
Pressure	: Up to 7 kg/cm ²
Temperature	: Max. 120° C
Discharge Size	: 12 mm to 80 mm
Air Inlet Size	: 1/4" to 1/2"
Air Exhaust Size:	1/2" BSP
Solid Size	: Max. 12 mm
M.O.C.	: SS316, SS304, PP, PVDVE, Aluminum, etc...
Suction Lift	: Rubber Diaphragm: Dry: 4.5 mtr. Wet: 7.5 mtr.
	Teflon Diaphragm: Dry: 3 mtr. Wet: 6 mtr.

Application

- Solvents
- Acids
- Caustics
- High Viscous Liquids
- Hazardous & Flammable Liquids
- Barrel loading – unloading
- Filter press & transfer
- Slurry transfer

WGP SERIES

MULTI PURPOSE
ROTARY GEAR PUMPS WITH
SINGLE HELICAL GEARS



Operating Data :

Capacity	: Up to 150 M3/hr
Head	: Up to 120 Mtr.
Discharge Size	: 12 mm to 200 mm
Temperature	: Up to 250°C
Speed	: Up to 1500 rpm
Pressure	: Up to 12 kg/cm ²
M.O.C.	: C.I, C.S., SS-304 / 304L, SS316 / 316L, Bronze, Alloy-20, CD4MCU Hast alloy B & C , etc....

Applications :

- ☑ To delivery a variety of light and viscous liquids such as oil, fats, coal tar, paint, molasses.
- ☑ Highly viscous or semi viscous liquids like ammonia, bleaches, coaltar, dyes, fruits juice, gasoline, glycerin, glue, grease.
- ☑ Paints, sops solution etc...

WTPP SERIES

TRIPLEX PLUNGER PUMPS



Operating Data :

Flow	: Up to 150 LPM
Pressure	: Up to 500 BAR
Temperature	: Up to 60°C
Speed	: Up to 1450 rpm

Applications :

- ☑ High Pressure Jet Cleaning, Car Washing
- ☑ Hydro Blasting, Tube Cleaning
- ☑ Floor Cleaning, Descaling, Filter Press Cloth Cleaning

WMBP SERIES

HORIZONTAL CENTRIFUGAL
MONOBLOCK PUMPS



Operating Data:

Head	: Up to 60 Mtr.
Capacity	: Up to 120 m ³ /hr
Discharge Size	: 25 mm to 100 mm
Power Rating	: 1.0 HP to 20 HP – Three phase 0.5 HP to 2.0 HP – Single phase
Voltage Range	: 380 V to 415 V – Three phase 200 V to 240 V – Single Phase
Speed	: Up to 2880 rpm
M.O.C.	: C.I., CS, SS-304, SS 316, Bronze, etc.

Applications:

- Gardening and irrigation.
- Agriculture, farms, civil application.
- Industries for clear water handling, cooling tower.
- Water supply for domestic use in apartments, building commercial complexes, hotels, swimming pools, automobile service station, hospitals, Clubs, hostels.
- Power plant, fire fighting.

INDUCTION MOTOR



Applications:

Type	: Squirrel Cage Induction Motor - IE2, IE3 & IE4
Power Range	: 0.5HP to 3.0 HP, 0.5HP to 425HP
Frame Size	: 63 to 355 L
Speed	: 2900 / 1450 / 960 / 740 rpm
Version	: 1ph - CST / CSCR, 3ph - DOL / SD
Insulation Class	: "B" / "F" Class
Protection	: IP 44 / IP 55
Duty	: S1 continuous
Mounting	: Foot (B3) / Flange (B5) / Face (B14) / Foot cum Flange (B35) / Foot cum face (B34)
Direction of Rotation	: Bi-direction3

PUMPS SPARES



VALUABLE CLIENTS



CLIENT DETAILS

Company Name _____ Date: _____

Address _____

Type of Industries _____

Contact Person Name & Designation _____ Contact No.: _____

E mail _____

DETAILS FOR PUMP SELECTION

PUMP TYPE: Horizontal Vertical Submersible Self-Priming

PUMP APPLICATION:

Thermic Fluid Process ETP Filtration

Transfer Loading Unloading STP Others

PUMPING FLUID / LIQUID NAME:

Duty: Continuous Intermittent

PRESENCE OF SOLIDS / FOREIGN PARTICLES: Yes No

Solid Size: _____ Specific Gravity: _____

Viscosity: _____ Temperature: _____ pH Value: _____

PUMP PERFORMANCE:

Discharge Capacity in M³/hr. or LPM: _____ Delivery Head / Differential head in Meters: _____

Suction Head in Meters: _____ Discharge Pressure in Kg/cm²: _____

MOC: Stainless Steel (S.S.) Cast Iron (C.I.) Other _____

SHAFT SEALING: Gland Type Mechanical Seal Type

PRIME MOVER: Motor / Engine: _____ KW/HP: _____

Phase : _____ Volts: _____ Hz: _____ RPM: _____

Base Plate, Coupling Guard: Yes No

ANY OTHER INFORMATION:



MACWINTM
ENGINEERS

Factory Address :

69, Vishala-111 Estate, Near Hari Om Estate, S.P. Ring Road,
Odhav, Ahmedabad, Gujarat - 382415.
Contact : +91 76004 16418 / +91 95105 01393
E-mail : info@macwinpumps.com
Web : www.macwinpumps.com

Authorised Dealer :

